



【Online】 Knowledge Co-Creation Program (Group & Region Focus)

GENERAL INFORMATION ON
PARTICIPATORY LOCAL SOCIAL DEVELOPMENT(PLSD)
課題別研修「参加型地域社会開発(PLSD)」

JFY 2021

NO. 202003033-J001 / ID. 202003033

Course Period: From September 6, 2021 to October 22, 2021

This program is ONLINE.

There is no component of on-site program in Japan.

This information pertains to one of the JICA Knowledge Co-Creation Program (Group & Region Focus) of the Japan International Cooperation Agency (JICA), which shall be implemented as part of the Official Development Assistance of the Government of Japan based on bilateral agreement between both Governments.

'JICA Knowledge Co-Creation Program (KCCP)' as a New Start

In the Development Cooperation Charter which was released from the Japanese Cabinet on February 2015, it is clearly pointed out that *"In its development cooperation, Japan has maintained the spirit of jointly creating things that suit partner countries while respecting ownership, intentions and intrinsic characteristics of the country concerned based on a field-oriented approach through dialogue and collaboration. It has also maintained the approach of building reciprocal relationships with developing countries in which both sides learn from each other and grow and develop together."* We believe that this 'Knowledge Co-Creation Program' will serve as a center of mutual learning process.

I. Concept

Background

In the field of social development, number of programs and projects has presently been undertaken in developing countries. Particularly, Participatory Approach (PA) has largely been adopted in those activities because of its effectiveness on promoting people's participation in needs identification, decision-making, and capability building.

However, satisfactory level of achievements have not yet witnessed in terms of people's empowerment and institutional building that would be conducive to laying foundation for self-reliant and sustainable development. Faced with those situations, the specific characteristics of a local societal system and its indigenous mechanisms of resource utilization and management are particularly focused. They are fundamental conditions and social venues, where social development projects are to be formulated and implemented.

In response to meet this pressing requirement, JICA established the program on the new approach of Participatory Local Social Development (PLSD) in 1997. PLSD theory and framework are developed by Mr. Yutaka Ohama, the founder of PLSD, Ex-Associate Professor of Nihon Fukushi University. In collaboration with Mr. Ohama, JICA has been implementing the program since 1998.

For what and how?

The PLSD program is relevant and effective to those projects that adopt Participatory Approach and focus on particular uniqueness of a local society and community toward empowerment of a local society, as it aims for capability building of local society toward self-reliant and sustainable development and institutional development among stakeholders.

This will be achieved by this program to provide an opportunity for suitable officers/staffs to learn the theoretical framework and practical strategies, in order to enhance their capability of project planning and management compatible with the specific characteristics and conditions of a local societal and community system in their respective areas and countries.

Studies based on Japanese experiences in project planning and management that is from the collaboration between local governments and local communities would be useful and instrumental. It helps the participants understand the core points of this program and to attain the above-mentioned goals.

For whom?

This program is offered to organizations conducting and facilitating local social development projects/programs, and its officers/staff in charge.

The examples of local social development projects/programs compatible with the PLSD approach are often found in the field of irrigation and cooperative development, income generation, safety drinking water, environmental protection and preservation, community forestry, community development and local autonomy promotion and so on.

The organizations can be local governments, governmental agencies, NGOs/CBOs, research

institutes (including universities and colleges) and so on. The organizations are required to have clear plans to support and utilize the learnings from the participating staff to this program.

What is PLSD?

(1) The Objective of PLSD

The grand objective of PLSD is to facilitate the process of social capability building and institutional mechanism strengthening of a local society as a whole toward self-reliant, sustainable development, by way of analyzing the particular structure-functional characteristics of a target local societal system, of generating tactful policy measures based on the uniqueness identified, as well as of deploying participatory approach of experience-based learning for capability building and institutional linkage building in accordance with the prevailing condition and situation.

With the view to realize the said objective, the concrete and specific objectives are to be given as follows

- 1) To analyze and identify, from the structure-functional viewpoint, the potentials and constraints for development of a local societal system;
- 2) To generate rational and strategic policy framework and measures in accordance with the analysis of a local societal system; and
- 3) To enhance the utility of Participatory Approach (PA) in terms of capability building and institutional development in project activities, through the integration between the structure-functional analysis of a local societal system and the PA's experience-based learning method.

(2) Core Essence and Key Concepts of Participatory Approach (PA)

PA aims at the empowerment of a local people to be a main actor for development. In pursuit of this objective, many tactful measures must be deployed in order to effectively carry out strategic tasks. The key concepts PA focuses and upholds are (1) Conscientization, (2) Organization Building, (3) Capability Building, and (4) Networking. All of these compose the integral part and parcel of people's empowerment, and are interrelated one another in the process of activities.

It is of vital importance of us to understand that these are to be attained through people's experience-based learning process through their direct participation. This is actually the core essence of PA. People's participation in needs identification, decision-making and project implementation is important and meaningful only when it is understood in the above context. People's empowerment through experience-based learning in the continuous process of reflection and action is the most salient contribution of PA.

(3) Importance of Understanding the Local Societal System

It is obvious that capability building and social mechanism strengthening are vital for development. However, no single prototype approach can be applied for capability building.

Any local society or community has its own particular characteristic in terms of capabilities, mechanisms, and experiences resultant from its respective local social setups and conditions.

These factors must be considered during the process of development. To properly pursue the tasks of capability building and social mechanism strengthening, it is necessary to consider pre-existing elements as the basis of our development challenge.

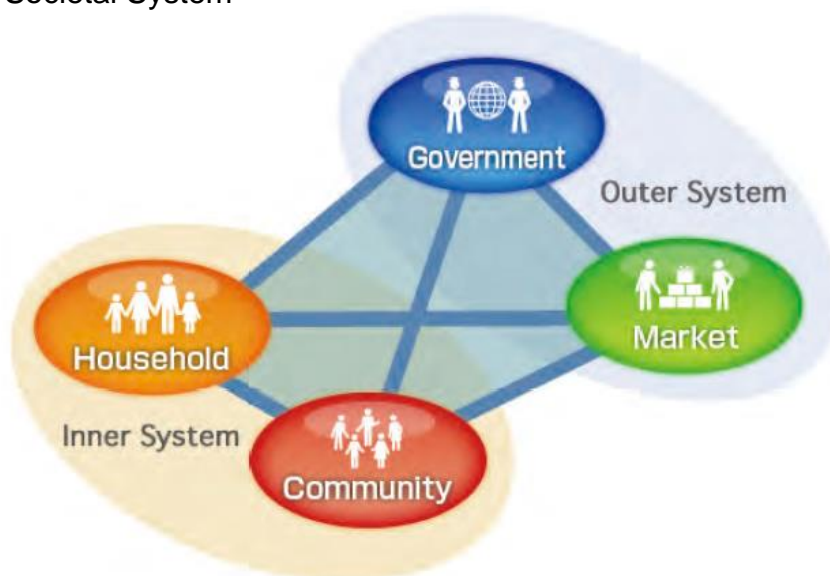
In this program, the following basic concepts will be introduced as key viewpoints for understanding a target group of people and its community or society:

- 1) Three Development Elements
- 2) Household Elements
- 3) Local Societal System
- 4) Local Community System
- 5) Socio-Geographical Unit.

Three Development Elements



Local Societal System



II. Description

1. Title: PARTICIPATORY LOCAL SOCIAL DEVELOPMENT (PLSD) (202003033-J001)

2. Course Period (Online Program)

〈Asia Course〉

From September 6, 2021 to October 22, 2021

〈The Other Area Course such as Africa and South America〉

From September 20, 2021 to October 22, 2021

- We plan to conduct Online Course **on live**. Therefore, you might take the course in the early morning in your country.

Asia Course 11:30~14:30 (JST)

The Other Area Course 16:00~19:00 (JST)

Note: The schedule might be modified.

3. Target Regions or Countries

Argentina, Indonesia, Malawi, Sierra Leone, Zimbabwe

4. Eligible / Target Organization

This program is offered to organizations currently conducting and facilitating local social development, and its officers/staff in charge of ongoing local social development projects, which are willing to adopt Participatory Approach and focus on particular reality /uniqueness of a local society and community toward empowerment of a local society.

The examples of local social development projects/programs compatible with the PLSD perspective and approach are often found in the field of irrigation and cooperative development, income generation, safety drinking water, environmental protection and preservation, community forestry, community development and local autonomy promotion, and so on.

*This PLSD is not so suitable and may not be beneficial for officers/staffs in charge of the other nature and approach of project that are based on the needs of other forces than the local people, or are in the condition of distorted community ties/lives. Specifically, such can be seen in the field of market economy development and privatization, peace building and social welfare to war victims, or, simply infrastructure building, etc.

*The organizations can be local governments, governmental agencies, NGOs/CBOs, research institutes (including universities) and so on. The organizations are required to have clear plans to support and utilize the learnings from the participating staff to this program.

5. Course Capacity (Upper limit of Participants)

6 participants

6. Language to be used in this program

English

7. Course Objective

The participants will be able to propose an action plan and/or activity in consideration of Participatory Local Social Development perspectives.

8. Overall Goal

The participants will be able to implement Participatory Local Social Development projects for aiming to strengthening the social basis for self-reliant and sustainable development both for the local society and for local people.

9. Expected Module Output and Contents

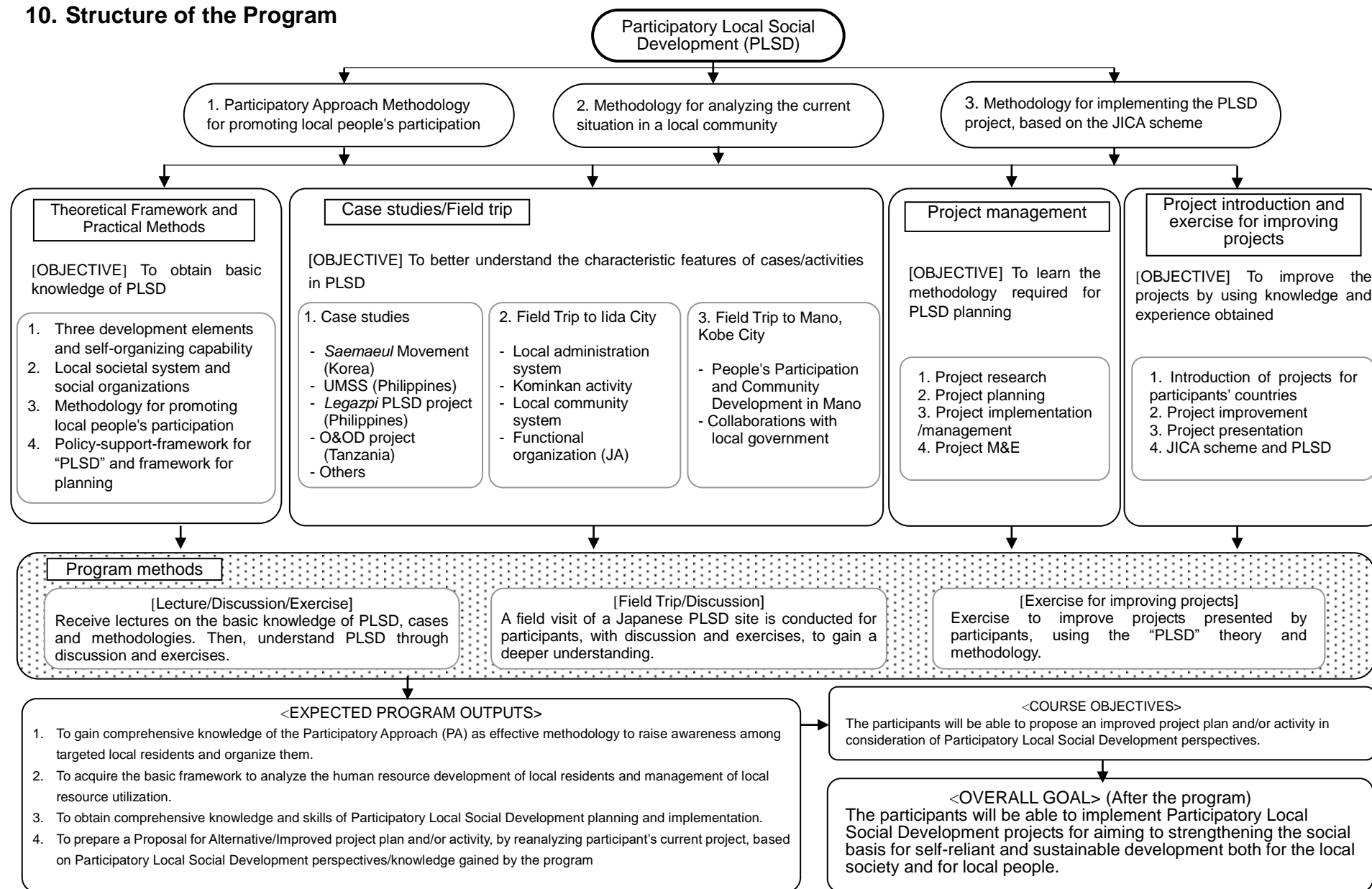
This program consists of the following components. Details on each component are given below:

(Asia) From September 6, 2021 to October 22, 2021

(The other area) From September 20, 2021 to October 22, 2021

Expected Module Output	Activities
To obtain the basic framework and concepts of Participatory Local Social Development	Historical background of and the basic framework and concepts of Participatory Local Social Development
To acquire the basic framework to analyze the local people's capability and mechanisms of resource utilization and management in the context of a local community/societal system	Self-organizing Capability and three development elements • Functional Capability Analysis of a local community / people • Local societal system and development / social organization • Case study of PLSD projects in developing countries
To gain comprehensive knowledge of the Participatory Approach (PA) as effective methodology to raise awareness among targeted local residents and organize them	PA methodology to facilitate local people's participation and empowerment: • Theory and practice of Participatory Approach • Correlation of PCM/PRA and PA • Effectiveness and limitation of PA
Submission of action plan, Presentation and Consultation	Preparation and submission of action plan *Note: the contents of action plan shall be reviewed / advised for the better in the light of PLSD framework and learnings.

10. Structure of the Program



Attention: Due to limitation of online program, some alternation on components and subjects shall be made, such as exclusion of field trips and project management.

11. Reference

【Contents and Structure of PLSD Online Training】

Part 1 Lectures on Basic Concepts and Practical Methods of PLSD

Day 1: Background, Basic Concepts and its Meanings of PLSD (3 hours)

- (1) Understanding of Development, its Objectives and Goals, and Reviews in the Context of Self-Reliance and Sustainability
- (2) Eagle's Eyes to Capture the Interface among People's Life, Development Projects and Local Society: Scope and Perspective of PLSD for DEVELOPMENT

Day 2: Local Society (1) Self-Organizing Capability and its Components (3 hour)

- (1) Core Concept: Self-Organizing Capability of Local Society for Development
- (2) Sub Concepts: Three Development Elements, Basic Household Elements and Local Societal System (Outer System)

Day 3: Local Society (2) Understanding Self-Organizing Capability and Characteristics of Local Society (3 hours)

- (1) Functional Typologies of Local Community People's Activities and their Socio-Geographical Unit (Inner System)
- (2) Discussion and Summary to Understand Particular Characteristics of Target Local Community and Society as a Basis for Successful Development

Day 4: Practical Methods of Participatory Approach (PA) (3 hours)

- (1) Core Essence of PA: "Experience-Based Learning Process" and its Essence

Day 5: Practical Methods of Participatory Approach (PA) (3 hours)

- (1) Importance and Meanings of Social Preparation (SP) and Functional Roles and KAS (Knowledge, Attitude and Skills) of Facilitator

Day 6: The Inner System as a Basis for Sustainability (3 hours)

- (1) Understanding on Indigenous Capability of Local People over Resource Utilization and Management

Day 7: Case Study of Samael Undong (A New Village Movement) and Reflections (3 hours)

- (1) Analysis of the Saemaul Undong by Participants
- (2) Sharing & Discussion of Findings & Lessons in PLSD Perspective

Day 8: Basic Viewpoint, Framework and Perspective of PLSD: Summary (3 hours)

- (1) Factors and Elements of Development (Diamond Model)

- (2) Meanings and Roles of Development Project as a Catalyst toward Self-Reliant and Sustainable Development

Day 9: Case Study of Legazpi PLSD Project and Reflections (3 hours)

- (1) Experience and Learnings from Legazpi PLSD Project
- (2) Comparative Reflection by Participants over their own Respective Projects

Day 10: Instruction and Discussion on AP Preparation (3 hours)

- (1) Instruction on Framework and Viewpoints for AP (Action Plan) Writing
- (2) Participants Preparation for AP Writing in terms of Outline and Contents

< Participants shall compile and submit AP in 2 weeks' time >

Part 2 Presentation and Sharing of the APs with Consultation and Advice for Improvement

Day 1 : Presentation and Sharing of AP by Participants (4 hours)

- (1) Sharing of APs among Participants in terms of their Current Status and Situation of Development Projects as well as Particular Issues and Problems They Face
- (2) Further Issues and Challenges they have learnt or Come to Understand through AP Writings as well as Particular Measures Identified to cope with them

Day 2: Individual Consultation and Guidance for AP Improvement (3 hours)

- (1) Evaluation of APs of Respective Participants (Evaluation Sheet)
- (2) Consultation and Advices of Specific Points of AP for Improvement

Day 3: Sharing Session on Possibility of Utilization and Introduction of PLSD to their Development Projects

- (1) Exchange of Ideas on Possible and Effective Utilization (contents and methods) of PLSD to Current On-Going Projects and Future Project Formulation
- (2) Advices on Problem and Issues that Participants might encounter and Possible Measures and Tactics to cope with them in their working places and /or with their colleagues in Project Sites

III. Conditions and Procedures for Application

1. Expectations for the Participating Organizations

- (1) This program is designed primarily for organizations that intend to address specific issues or problems identified in their operation. Participating organizations are expected to use the project for those specific purposes.
- (2) This program is enriched with contents and facilitation schemes specially developed in collaboration with relevant prominent organizations in Japan. These special features enable the project to meet specific requirements of applying organizations and effectively facilitate them toward solutions for the issues and problems.

2. Nominee Qualifications

Applying Organizations are expected to select nominees who meet the following qualifications and illustrate the fact and reasons for the nomination in application form.

(1) Essential Qualifications

1) Current Duties

Officers/staffs in charge of ongoing local social development projects, which are willing to adopt Participatory Approach and focus on particular reality/uniqueness of a local society and community toward empowerment of a local society.

*The examples of local social development projects/programs compatible with the PLSD perspective and approach are often found in the field of irrigation and cooperative development, income generation, safety drinking water, environmental protection and preservation, community forestry, community development and local autonomy promotion and so on.

*This PLSD is not so suitable and may not be beneficial for officers/staffs in charge of the other nature and approach of project that are based on the needs of other forces than the local people, or are in the condition of distorted community ties/lives. Specifically, such can be seen in the field of market economy development and privatization, peace building and social welfare to war victims, or, simply infrastructure building etc.

Suitable Organization: Nominees should belong to in relevant organizations such as local governments, government agencies, NGOs/CBOs, research institutes (including universities and colleges), and so on.

*Nominees must be organizationally assigned to a clear mission and tasked with local social development projects, and must be in the proper position to utilize the new knowledge in real practice.

*The nominee's organization must support participants for holding the meeting aiming at sharing their knowledge or experiences learned from this program with their colleagues and related persons after returning to home countries.

2) Experience in the relevant field

Have more than 5 years' experience in the relevant field.

*The first-hand and rich field experiences of community organization, project planning/ implementation / M&E with local people as well as in-depth community analysis will be highly valued and prioritized.

3) Educational background

Be university graduates or the equivalent.

4) Language

Have a sufficient command of speaking and writing English (At least TOEFL PBT 500 is required).

5) Health

Nominee must be in good health, both physically and mentally, to participate in these programs. Pregnant applicants are not recommended to apply due to the potential risk of health and life issues of mother and fetus.

6) Network for online programs

Please secure the network environment (about 5 Mbps or more) because of online programs.

7) Please prepare the PC or tablet which has a camera and microphone. Also these Devices have to be connected to the network.

Note: Please contact the JICA office in your home country, if you have any problems regarding network environment, devices, and so on.

8) Please install the applications (the Internet browser) such as Safari, Firefox, Google, and so on, because you may use these applications for online program.

(2) Recommendable Qualifications

1) The nominees are expected to have good social / communication skills for effective learning in amicable collaboration.

2) Those who have been devoting and who will continue to devote themselves to the

activities of the social development project are highly prioritized to this program.

3) The nominees shall be over twenty-eight (28) and under forty-five (45) years of age.

3. Required Documents for Application

(1) Application Form

The Application Form is available at **the respective country's JICA office (or the Embassy of Japan)**.

(2) Photocopy of Passport

*Photocopy should include your name, date of birth, nationality and gender.

*If you do not have a passport, please submit a copy of an alternative ID card.

(3) Nominee's English Score Sheet

To be submitted with the application form. If you have any official documentation of English ability. (e.g., TOEFL, TOEIC, IELTS)

Discussion is an important factor in this course, so if you do not add an English score sheet the candidate will be eliminated.

(4) Application Statement (See ANNEX)

Application Statement must be submitted with the application form. The application will NOT be considered unless Application Statement is submitted along with the Application form.

4. Procedure for Application and Selection

(1) Submission of Application Documents and Other Required Documents

Please inquire the due date to the JICA office (or the Embassy of Japan).

After receiving applications, the JICA office (or the Embassy of Japan) will send them to **the JICA Center in Japan by July 16, 2021**

(2) **Selection** after receiving the documents through proper channels from your government, the JICA office (or the embassy of Japan) will conduct screenings, and then forward the documents to the JICA Center in Japan. Selection will be made by the JICA Center in consultation with concerned organizations in Japan.

The applying organization with the best intention to utilize the opportunity of this program will be highly valued in the selection.

Qualifications of applicants who belong to the military or other military-related organizations and/or who are enlisted in the military will be examined by the Government of Japan on a case-by-case basis, consistent with the Development Cooperation Charter of Japan, taking into consideration their duties, positions in the organization, and other relevant information in a comprehensive manner.

(3) **Notice of Acceptance**

Notification of results will be made by the JICA office (or the Embassy of Japan) **not later than August 6, 2021**.

5. Conditions for Attendance

The participants shall agree:

- (1) to strictly adhere to the program schedule.
- (2) not to change the program topics.
- (3) to stay concentrated only on the program, away from daily job assignments.
- (4) to follow the Term of Use for the Online KCCP (privacy and copyright policy).

https://www.jica.go.jp/english/our_work/types_of_assistance/tech/acceptance/training/index.html

IV. Administrative Arrangements

1. Organizer

(1) Name: JICA Chubu Center (JICA Chubu)

(2) Contact: Mr. ITOYAMA Hiroshi (cbictp1@jica.go.jp, Itoyama.Hiroshi@jica.go.jp)

* Please add the course number “202003033-J001” to a message subject in your mail.

2. Implementing Partner

Name: Mr. Yutaka Ohama, the founder of PLSD, Ex-Associate Professor of Nihon Fukushi University

Remark: Mr. Ohama has developed PLSD theory and framework. In collaboration with him JICA has been implementing the program since 1998.

3. Other arrangements

As the most of the seminars will be live-streamed via Zoom, participants will need a computer with a microphone and webcam, stable/high-speed internet connection. If you are not able to arrange internet access/devices necessary to participate in the online course, JICA will make arrangements for the participants. Please contact the JICA office in your country or JICA Chubu for more information.

V. Other Information

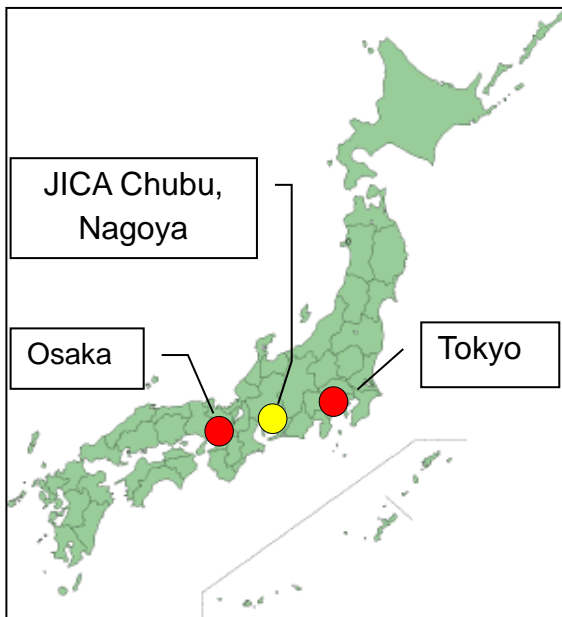
About JICA Chubu Center

<Location>

It is located at the west of *Nagoya*-city. The Nagoya Station, the regional hub of various transports, is 15mins walk from JICA Chubu Center.

<Recommended Websites>

- ✓ JICA Chubu's website: www.jica.go.jp/chubu/english/office
- ✓ Aichi prefecture: www.heart-of-japan.jp/



VI. ANNEX:

Guideline for Application Statement

Kindly prepare and submit, together with A2A3 Form, the Application Statement on the followings. It should be 2 to 3 pages in volume, A-4 size paper with single space.

Report Contents

1. Define DEVELOPMENT in your own understandings & perception in accordance with your learnings and experiences.
2. Describe your Project (Past or Present) in terms of;
 - (1) Objective and Approach / Method adopted and their Reasons
 - (2) Problems and Difficulties encountered during Project Implementation and their Background Factors and/or Reasons
 - (3) Measures taken to cope with the above and their rationale
3. Specify your Particular Interest and Concerns as well as Expectations from this Program

The Report should be prepared in conformity with the guidelines given herewith.

- The application will NOT be considered unless the Application Statement is submitted along with the Application form.
- No copies from previous project reports. The report not following this guideline is not acceptable.
- The report should be 2 to 3 pages in length and be typewritten in A4 size paper.

Note: JICA Center and the related experts examine both Application form and Application Statement closely for the selection, as the important base-line information to acknowledge whether and how this program can contribute to capacity development of the applicants as well as to support to solve the fundamental problems.

- In addition, job experiences and English ability will be carefully screened by use of the Application Statement and the English score sheet. There were some participants with inadequate job experiences and English ability who found themselves unable to follow the program and to make the best progress/outcome from their participation.
- JICA Chubu may contact an applicant directly regarding to your report, and may hold a direct interview over Internet if necessary.

For Your Reference

JICA and Capacity Development

The key concept underpinning JICA operations since its establishment in 1974 has been the conviction that “capacity development” is central to the socioeconomic development of any country, regardless of the specific operational scheme one may be undertaking, i.e. expert assignments, development projects, development study projects, training programs, JOCV programs, etc.

Within this wide range of programs, Training Programs have long occupied an important place in JICA operations. Conducted in Japan, they provide partner countries with opportunities to acquire practical knowledge accumulated in Japanese society. Participants dispatched by partner countries might find useful knowledge and re-create their own knowledge for enhancement of their own capacity or that of the organization and society to which they belong.

About 460 pre-organized programs cover a wide range of professional fields, ranging from education, health, infrastructure, energy, trade and finance, to agriculture, rural development, gender mainstreaming, and environmental protection. A variety of programs are being customized to address the specific needs of different target organizations, such as policy-making organizations, service provision organizations, as well as research and academic institutions. Some programs are organized to target a certain group of countries with similar developmental challenges.

Japanese Development Experience

Japan was the first non-Western country to successfully modernize its society and industrialize its economy. At the core of this process, which started more than 140 years ago, was the “*adopt and adapt*” concept by which a wide range of appropriate skills and knowledge have been imported from developed countries; these skills and knowledge have been adapted and/or improved using local skills, knowledge and initiatives. They finally became internalized in Japanese society to suit its local needs and conditions.

From engineering technology to production management methods, most of the know-how that has enabled Japan to become what it is today has emanated from this “*adoption and adaptation*” process, which, of course, has been accompanied by countless failures and errors behind the success stories. We presume that such experiences, both successful and unsuccessful, will be useful to our partners who are trying to address the challenges currently faced by developing countries.

However, it is rather challenging to share with our partners this whole body of Japan’s developmental experience. This difficulty has to do, in part, with the challenge of explaining a body of “tacit knowledge,” a type of knowledge that cannot fully be expressed in words or numbers. Adding to this difficulty are the social and cultural systems of Japan that vastly differ from those of other Western industrialized countries, and hence still remain unfamiliar to many partner countries. Simply stated, coming to Japan might be one way of overcoming such a cultural gap.

JICA, therefore, would like to invite as many leaders of partner countries as possible to come and visit us, to mingle with the Japanese people, and witness the advantages as well as the disadvantages of Japanese systems, so that integration of their findings might help them reach their developmental objectives.



CORRESPONDENCE

For enquiries and further information, please contact the JICA office or the Embassy of Japan. Further, address correspondence to:

JICA Chubut Center (JICA Chubu)

Address: 4-60-7 Hiraike-cho, Nakamura-ku, Nagoya, 453-0872, Japan

Phone: 81-52-533-0220 FAX: 81-52-564-3751